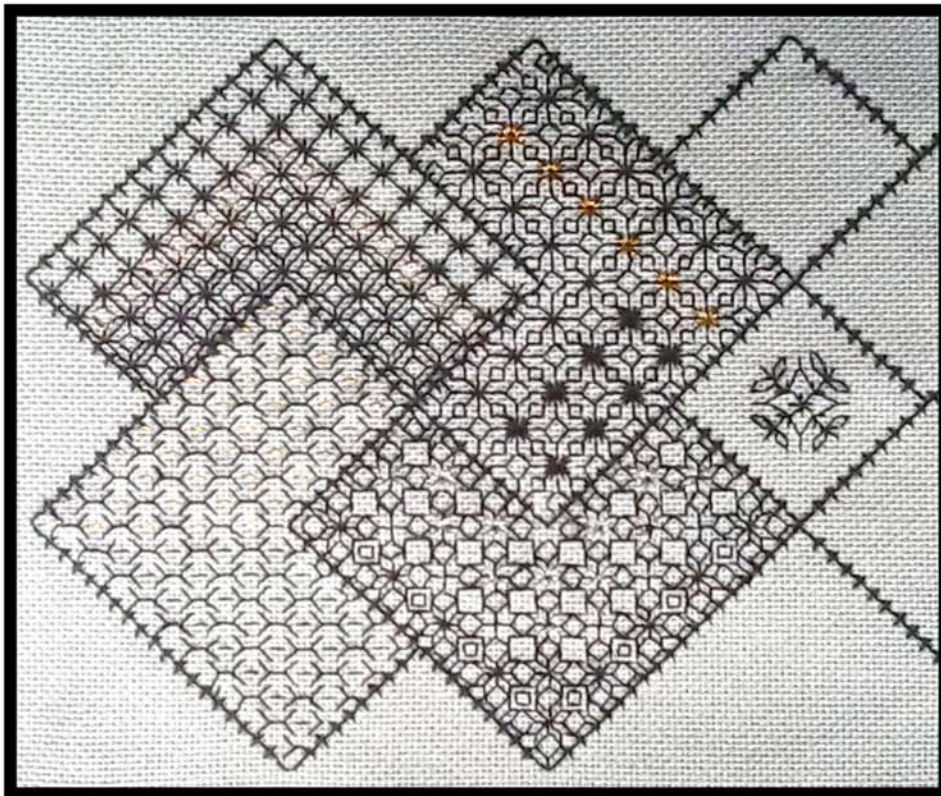
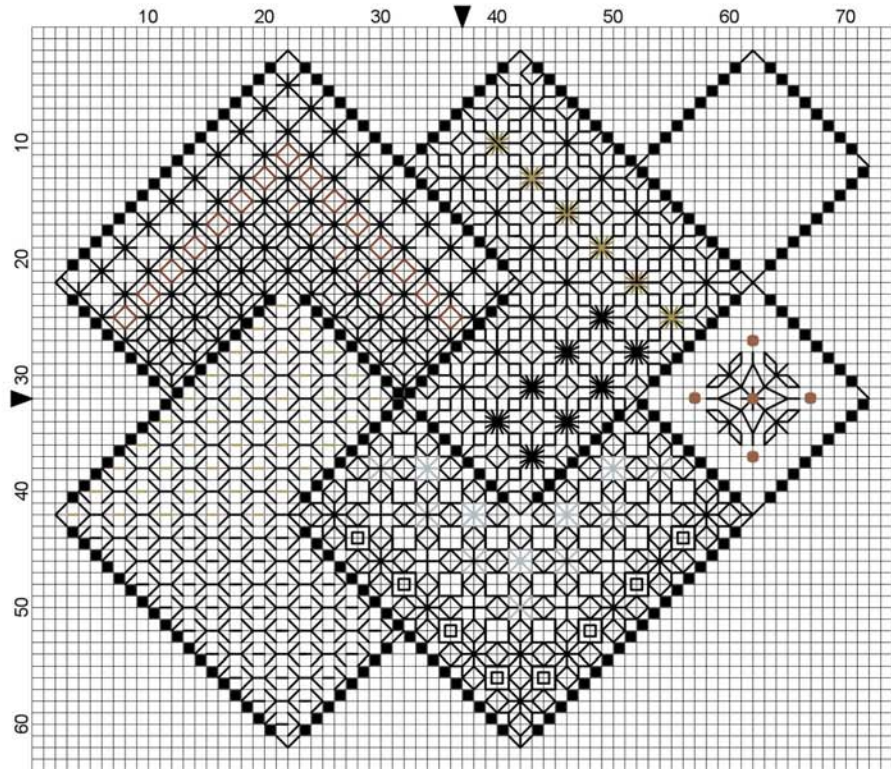


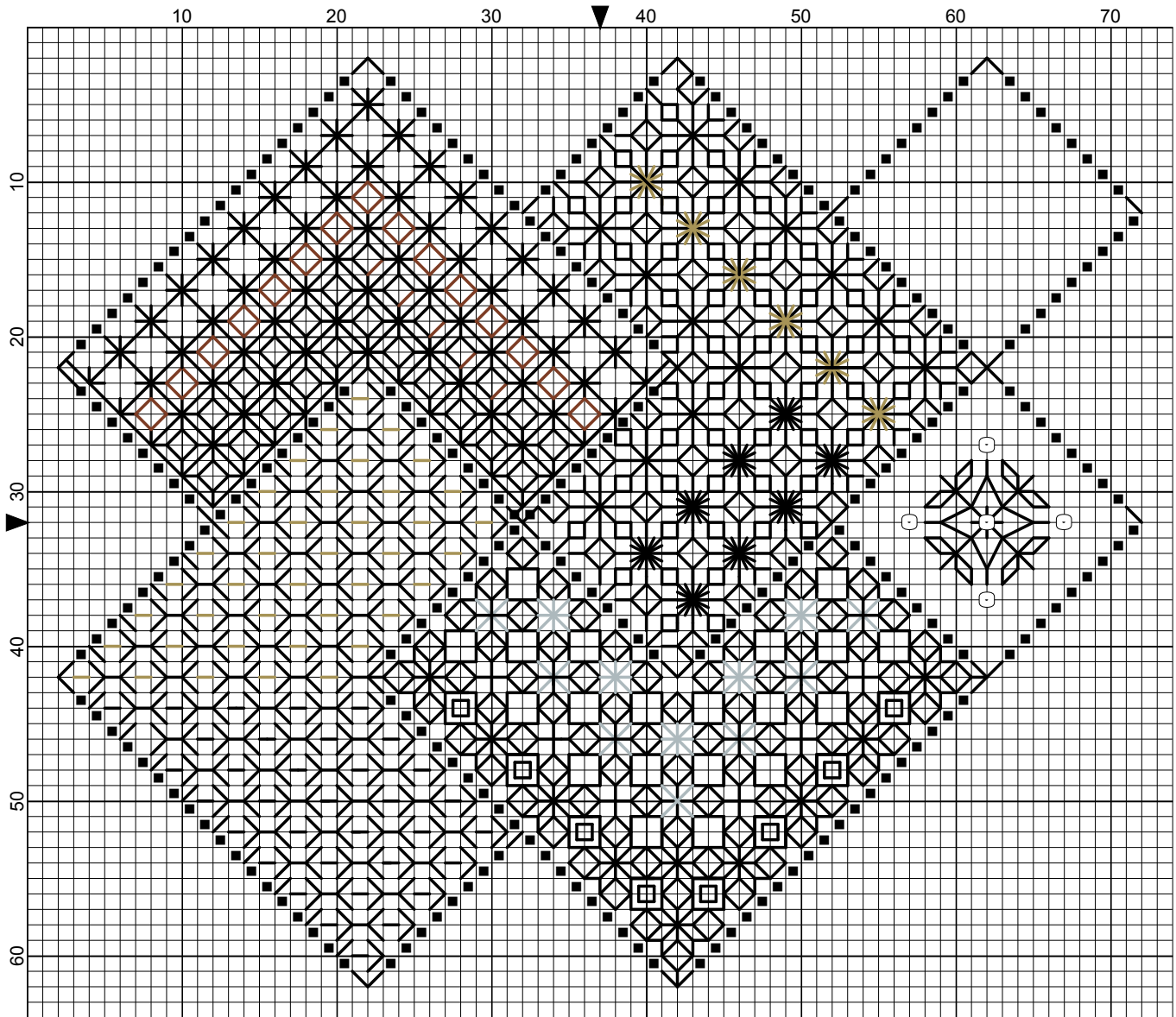
# SAVE THE STITCHES

Blackwork Journey - Designs by Elizabeth Almond

## Block 1 Patterns 1 - 5



Save the Stitches Block 1 Patterns 1 - 5



# Save the Stitches Block 1 Patterns 1- 5

---

**Author:** Elizabeth Almond  
**Copyright:** Elizabeth Almond  
**Grid Size:** 74W x 64H  
**Design Area:** 5.00" x 4.29" (70 x 60 stitches)

**Legend:**

■ [2] DMC-310 ANC-403 DLE- black

**Backstitch Lines:**

— DMC-310 black  
— DLE-E3821 Light Gold  
— DLE-E301 Copper  
— DLE-E415 Pewter

**Beads:**

○ MHG-557 Mill Hill Glass Beads-Gold

Stitches:  
Cross Stitch  
Back Stitch

Cross stitch is worked in either DMC Cotton Perle, or DMC 310 Black, TWO strands  
Diaper filling patterns are worked in ONE strand of DMC 310 unless otherwise stated.

Follow the Block and insert the correct patterns into the numbered areas.

